



**HBU** 北海道文教大学  
HOKKAIDO BUNKYO UNIVERSITY



### Where are we?



Located in *Eniwa*, the Garden City of Hokkaido

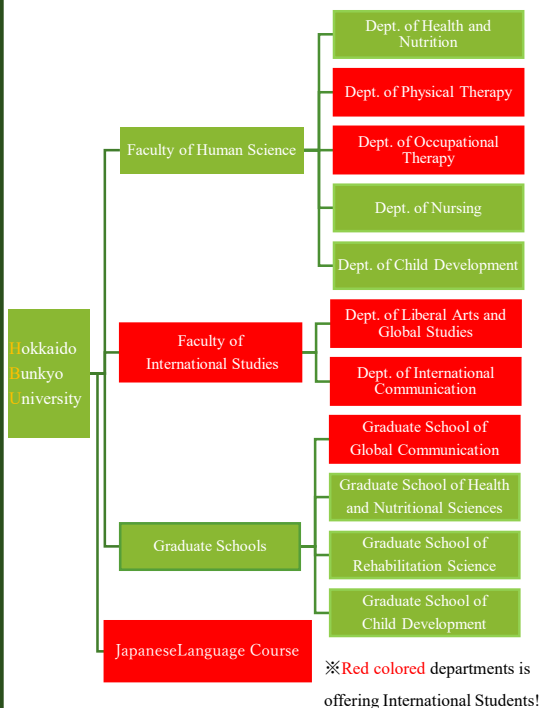
- ◇ Only 24 minutes from Sapporo by JR train.
- ◇ Only 13 minutes from the New Chitose Airport by train.
- ◇ Many international students have part-time jobs in Sapporo or at the airport.

### School Motto / Faculties and Graduate Schools



**Shintaro** and **Toshi Tsuruoka**, the founders have made the school Motto, Which is a coined word names as “Sei-Sei-Shin-Jitsu”. Each character represents the following meanings:

- 清 (Sei)** :Explore truth with fresh intelligence.
- 正 (Sei)** :Sincere ethics based on justice.
- 進 (Shin)** :Shape the future with a forward-looking spirit.
- 実 (Jitsu)** :Contribute to the improvement of the people’s lives through practical learning.



### International Student Support Program

- ◇ 40% Discount for “Tuition Fee”
- ◇ An affordable furnished apartment.
- ◇ We will help you register documents in city office and bank account.
- ◇ A career center is ready for you to assist your job hunting.



HBU Welcomes International Students!

FOR MORE DETAILS? COME AND CHECK OUR WEBSITE! <https://www.do-bunkyo.ac.jp/>